



World Gemological SERVICES

"SETTING THE STANDARD IN SERVICE AND EDUCATION"

Jewelry Insurance Replacement Appraisal

Home Consignment Center

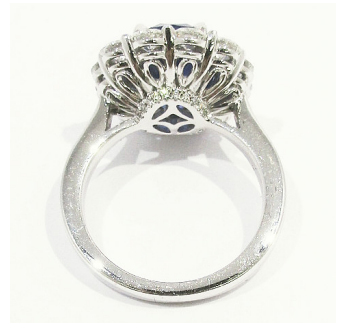
WGS Report # 01-001-090817-B01B04-1-090817-WQC

One (1) Lady's Marked Platinum Blue Sapphire and Diamond Ring. The Ring weighs approximately 12.20 grams and is of Cast manufacture. Ring is of Contemporary design and is in a Bright finish. The Ring tapers from 2.50mm - 17.50mm with additional markings "PT900".

Prong set is 1 Oval Faceted Blue Sapphire of Fine Quality and Slightly Violetish Blue Color and Strong Saturation that measures Approximately 11.97mm in Length X Approximately 9.41mm in Width X Approximately 7.23mm in Depth and Estimated to weigh 7.18 carats.

Prong set are 12 Round Brilliant Cut Diamonds which average VS1 Clarity and F Color with an average measurement of Approximately 3.30mm - 3.20mm in Diameter and Estimated to weigh a total of 1.56 carats.

Pave set are 20 Round Brilliant Cut Diamonds which average VS1 Clarity and F Color with an average measurement of Approximately 0.85mm in Diameter and Estimated to weigh a total of 0.04 carats.



*Images not to actual size

Estimated Insurance Replacement

\$47,545.07

Taxes not included

Date of Completion

09/08/2017

William D. Carter
Jewelry Appraiser GIA Graduate Gemologist

This appraisal has been prepared in conformity with the principles of appraisal practice according to the Uniform Standards of Professional Appraisal Practice. Jewelry appraisal and evaluation is not a pure science. This value represents our opinion of the current insurance replacement value of the item(s) described. We do not guarantee that at the time of loss any item can be replaced at the value we suggest. This appraisal should not be used as the basis for purchase or sale of the above item(s). We assume no liability for these opinions. The function of this appraisal is insurance with the purpose of estimated retail replacement value per specific request of the client, the item in this report has been fully examined by a GIA Graduate Gemologist. The statements recorded are based on the opinion of the GIA Graduate Gemologist as a result of the examination. Gem weights are estimated by formula unless noted. Gems are graded as mounting permits.

CLARITY GRADES

F	IF	VVS1	VVS2	VS1	VS2	SI1	SI2	I1	I2	I3
Flawless	Internally Flawless	Very, Very Slight Inclusions		Very Slight Inclusions		Slight Inclusions		Visible Inclusions		

COLOR GRADES

D	E	F	G	H	I	J	K	L	M	N	O	P	Q	R	S	T	U	V	W	X	Y	Z
Colorless		Near Colorless		Faint Yellow		Very Light Yellow		Light Yellow														





